

# The Shrewsbury and Telford Hospital NHS Trust

## About the Hospitals Transformation Programme

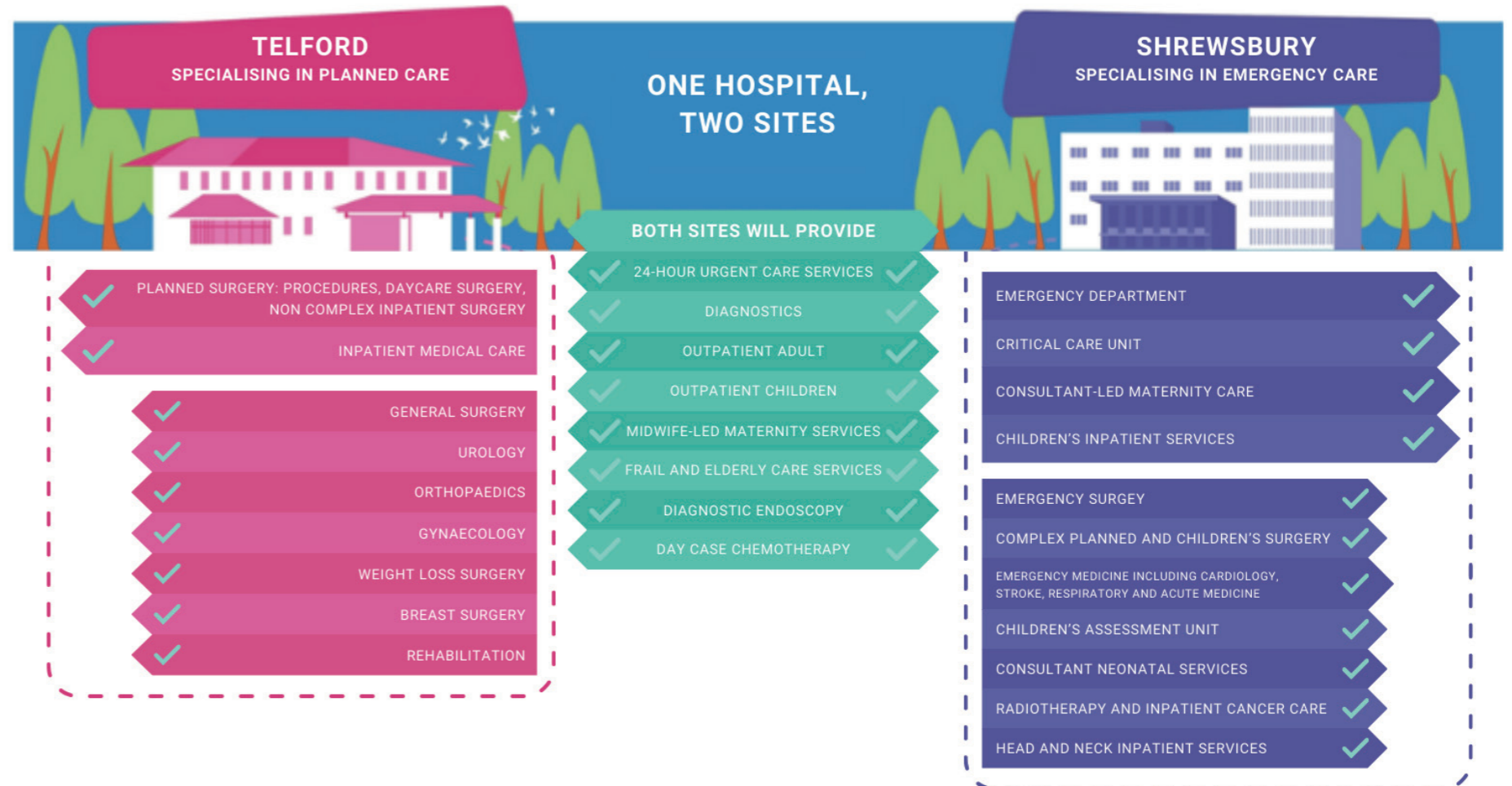
The Hospitals Transformation Programme (HTP) plans to transform acute hospital services for communities across Shropshire, Telford and Wrekin and mid-Wales. To achieve this, it is vital that we invest and upgrade our facilities to support modern healthcare practices.

The clinical model for these improvements was agreed upon following the Future Fit consultation in 2018, which explored issues and solutions across the Trust. We are now working hard to progress through the final stage of national approval for the HTP development. In the meantime, we have received planning permission for work at Royal Shrewsbury Hospital as well as national funding to start the necessary enabling works.

This new model of care was designed, led and supported by clinicians and will see patients benefit from fewer cancellations and delays for planned procedures.

**The plans will deliver two thriving sites:** The Trust will continue to develop services and invest at both the Telford and Shrewsbury sites, working closely with staff, local communities, and other stakeholders to deliver the most value.

The service changes will improve care for all people across Shropshire, Telford and Wrekin, and mid-Wales.



**Summer 2022**  
Strategic Outline Business Case approved

**Early 2023**  
Development of Outline Business Case

**Summer 2023**  
Outline Business Case submitted to NHS England

**Winter 2023**  
Outline Business Case approved

**Early 2024**  
Planning application approved by Shropshire Council

Find more information

# The Shrewsbury and Telford Hospital NHS Trust

## The Princess Royal Hospital improvement plans

A significant multi-million-pound investment is already underway at The Princess Royal Hospital in Telford.

Once all work is complete, The Princess Royal Hospital will become the site specialising in planned care.

It will include:

- Diagnostic endoscopy
- Medical and surgical inpatients on a planned pathway of care
- Adult and child outpatient services
- Day case surgery centre
- Midwife-led Unit
- 24/7 urgent treatment service
- Procedure suite (for local anaesthetics)
- Enhanced rehab facilities and two new therapy led wards
- Respiratory day case unit
- Chemotherapy day case unit



CGI of Planned Care Hub at Princess Royal Hospital



The new entrance of Princess Royal Hospital in Telford

Find more information

# The Shrewsbury and Telford Hospital NHS Trust

## The Princess Royal Hospital plans

Work is progressing on our £24million Planned Care Hub at PRH with the first beds expected to open to patients in 2024. This purpose-built facility will consist of four theatres and a dedicated recovery area for elective care.

The hub will enable the Trust to deliver day case operations all year round which means that:

- Patients will face fewer delays for treatment, improving outcomes
- We are not likely to postpone procedures due to winter and bed pressures

The hub is a key part of our long-term plans to deliver improvements in care for the population and create two thriving hospitals.

The majority of visits to our hospitals are for outpatient appointments, which will be available for both children and adults at the Princess Royal Hospital. Patients will also benefit from a new cancer treatment day centre which will enhance the quality, capacity and efficiency of cancer care.

The cancer treatment centre is a new facility and is an expansion of the current service at the Royal Shrewsbury Hospital. It supports the wider healthcare ambitions of providing care close to home, where possible, for those who may be receiving chemotherapy to access the regular care they need. Currently 40% of cancer patients being treated in the catchment area, served by The Shrewsbury and Telford Hospital NHS Trust, live in Telford.



CGI of improvement plans, including four new theatres, at the Princess Royal Hospital



[Find more information](#)

# The Shrewsbury and Telford Hospital NHS Trust

## The Royal Shrewsbury Hospital proposals

Several of the hospital buildings at the site are ageing. They are not designed to modern healthcare standards, not environmentally sustainable and they prevent us from operating efficiently and effectively.

The approved plans will see the Royal Shrewsbury Hospital site specialise in emergency care. This will provide the community with faster access to the right clinical teams, which will deliver better care and outcomes for our patients.

The plans will see a remodelling and expansion of the Royal Shrewsbury Hospital across approximately 30,000 sq. m of accommodation to provide:

- A new 3,200 sq. m emergency department and emergency care facilities including an Urgent Treatment Centre and a Critical Care Unit
- Emergency Medicine including Acute Medicine
- Consultant-led Maternity Care
- 3,200 sq. m of new children's centre accommodation including children's inpatient and surgery services
- Gynaecological Services
- Consultant Neonatal Services
- A new Oncology and Haematology ward
- A new entrance, reception and hospitality offer as well as enhanced patient drop off facilities to cater across Shropshire, Telford and Wrekin, and mid-Wales



CGI of new facilities at Royal Shrewsbury Hospital

Find more information

# The Shrewsbury and Telford Hospital NHS Trust

## Improving the Royal Shrewsbury Hospital experience for all

### The service changes will improve care for all people across Shropshire, Telford and Wrekin, and mid-Wales.

There will be two new front doors, one to the Emergency Department and one to the new main entrance. Each department has been designed with both the patient journey and the operational policy in mind.

Upon entering the Emergency Department there will be large new reception and triage areas, with dedicated waiting for adults and children.

There will be an expanded provision for 10 ambulances, with a protective canopy to improve patient transfer. The helipad is being relocated to the existing car park adjacent to the Emergency Department under the plans.

The new building will include a new acute medical floor and a new Critical Care unit in new purpose-built accommodation.

The exterior of the hospital will benefit from areas of soft landscaping to soften the hospital's frontage and enhance the patient and visitor experience, whilst the entrance to the hospital will lead to a new double height atrium. This will connect the new and the old hospital with a lightweight structure.

The new building will include 'sky decks' which will be used to assist with patient recovery and can also be used by staff and visitors.

The café and waiting area will lead off from the atrium with views into a new courtyard.



CGI of new facilities at RSH including a new front entrance



Illustrative canopy planned for expanded ambulance waiting area



An indicative image of what the sky deck could look like

Find more information

[www.shropshiretelfordandwrekin.ics.nhs.uk/hospitals-transformation-programme/](http://www.shropshiretelfordandwrekin.ics.nhs.uk/hospitals-transformation-programme/)

# The Shrewsbury and Telford Hospital NHS Trust

## Construction management plan

### Enabling works have now commenced on site and are expected to continue until the summer.

As with any construction project, there may be some disruption to users and neighbours in respect of noise, dust and vibrations.

A construction management plan is being agreed with the council to minimise this. Integrated Healthcare Projects (IHP) has been selected as a specialist hospital contractor, and is therefore used to working in these environments. IHP is a member of the Considerate Constructors Scheme, which aims to respect communities impacted by building works.

The construction management plan will include set working times. We will publicise these once the construction management plan is agreed with the Council. Any work that might take place outside of these working times would require special permission and agreement in advance.

Our contractors are committed to operating through considerate construction and will deliver social value to the development of the new hospital building.

The development will be carried out in phases whilst maintaining the full operation of the hospital. The phasing will start with preparatory works and the reconfiguration to the Emergency Department.



[Find more information](#)

# The Shrewsbury and Telford Hospital NHS Trust

## Work to improve car parking for everyone

We know how challenging the car parking situation can be and we are committed to improving this at all our sites. We continue to prioritise our car parking for patients and visitors, but also recognise that we need to support our colleagues, especially after long shifts.

We are continuing to explore a range of options to improve parking across our sites, including:

- A new park and ride service for staff at the Royal Shrewsbury Hospital site and exploring a park and ride service for staff at the Princess Royal Hospital. This will help us to prioritise the spaces on the Royal Shrewsbury Hospital site for patients and visitors
- We are working to maximise the existing space, in particular at our hospitals, to create additional car parking
- We are encouraging our colleagues that are able, to walk, cycle and where appropriate work remotely
- We are continuing to work with our building contractors to alleviate pressures on parking and encouraging them to use the park and ride.

Patients and visitors can help us by:

- Leaving plenty of time before appointments to allow for parking, you will find a space but we recognise it may take time
- Wherever possible have a relative or friend drop you off for an appointment and collect you afterwards
- If you are able to travel by public transport or are able to walk or cycle then please do so
- Drive slowly around the site and follow the latest signage in areas where construction is taking place
- Please respect our neighbours and do not park on neighbouring roads or block entrances.

## Changes to parking due to development work at Royal Shrewsbury Hospital

We are working hard to prioritise parking for our patients and visitors during the building works. However, throughout the development we may have to change the location of patient and visitor car parking on our site. Please continue to follow the signs and we will keep you updated throughout this work.

The first phase of the Hospitals Transformation Programme started in January with IHP (our HTP construction partners) setting up temporary site cabins and hoardings, which due to the location of building works need to be close to the Emergency Department. These will be located on the car park close to the entrance on Mytton Oak Road.

To ensure we do not reduce the number of parking spaces for patients and visitors, the car park by the Hamar Centre is now a patient car park. Please follow the car parking signs on site on arrival.



[Find more information](#)

## Temporary relocation of the helipad

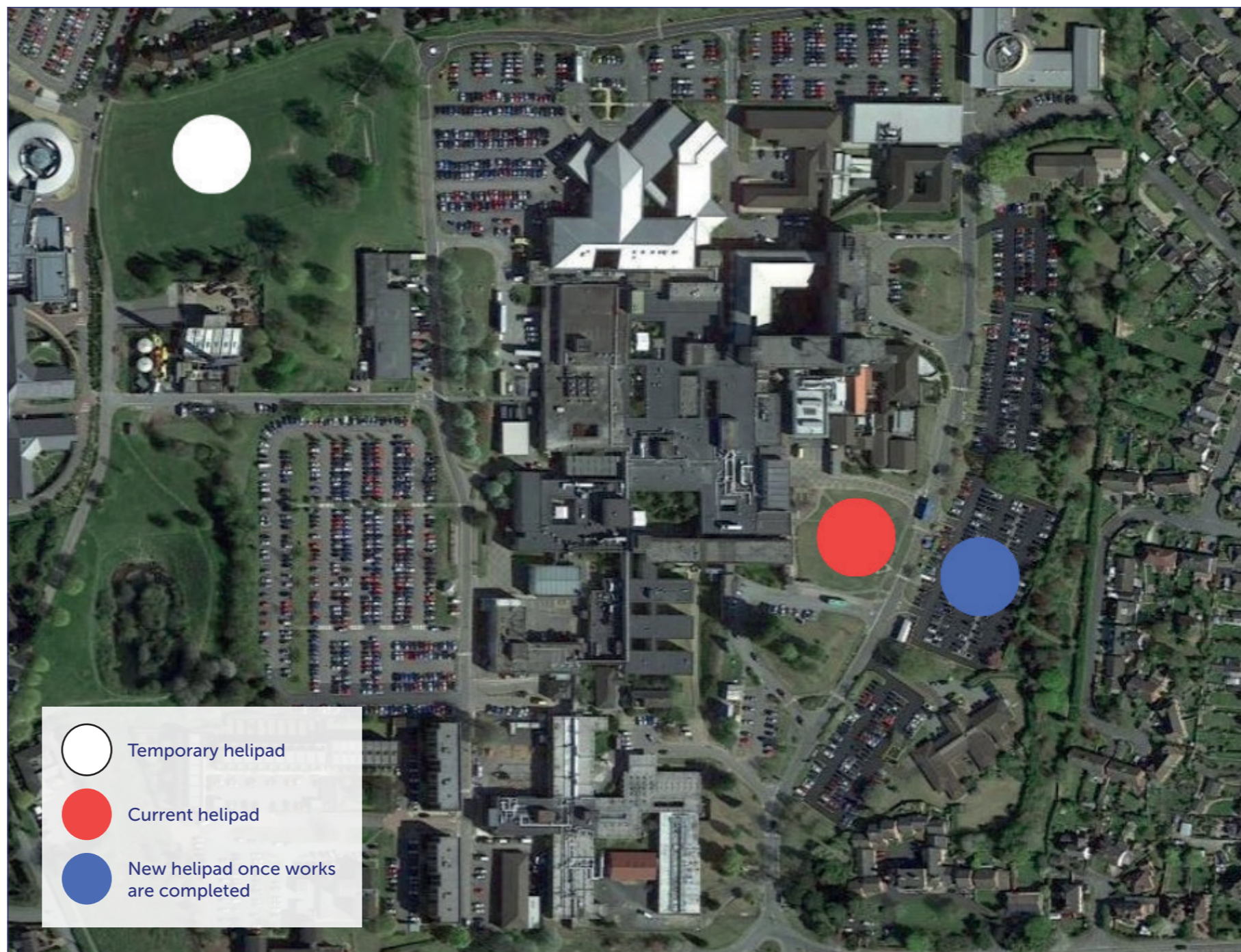
Construction works require the temporary relocation of the helipad, for a period of up to three years, to the recreation ground in Bicton Heath.

The site has been used previously as a temporary helipad and reasonable measures will be taken to minimise disruption for users and local sports teams.

The helipad will be used in times of emergency and as such, any users of the recreation ground will have up to 30 minutes of prior warning to evacuate the area so that it can be used safely.

The relocation of the helipad will not exclude local groups from using the recreation ground.

There should be no increase in the use of the helipad during construction of the new Emergency Department.



[Find more information](#)



# The Shrewsbury and Telford Hospital NHS Trust

## Next steps

**Thank you for visiting the exhibition to find out more about the construction of the new facilities at the Royal Shrewsbury Hospital and Princess Royal Hospital.**

### Your feedback

We welcome your feedback on the construction of the new facilities and want to know what you think and so please take the time to speak with a member of the team if you have any questions.

We are committed to engaging with the local residents to minimise disruption and improve the experience for all the communities we serve.

We will be holding regular drop-in sessions for neighbours during construction, as well as sending regular newsletters.

### Focus Groups

We are organising focus groups which will meet regularly over the next three years as plans develop. The focus groups are aligned to the clinical workstreams within the HTP programme and are:

- Women and Children's
- Medicine, Emergency Care, Surgery, Anaesthetics, and Cancer

If you would like to join any of these focus groups, information can be found here [www.sath.nhs.uk/about-us/get-involved/public-participation-2/get-involved-with-us-2/htp-focus-groups/](http://www.sath.nhs.uk/about-us/get-involved/public-participation-2/get-involved-with-us-2/htp-focus-groups/)

If you would like to receive email updates on the construction works, please contact [construction@cascaedcommunications.co.uk](mailto:construction@cascaedcommunications.co.uk)

If you have any questions about the improvement plans, please contact [sath.engagement@nhs.net](mailto:sath.engagement@nhs.net)

### Get in touch:

0808 281 9554

[construction@cascaedcommunications.co.uk](mailto:construction@cascaedcommunications.co.uk)

[rshospitalconstruction.co.uk](http://rshospitalconstruction.co.uk)

### Find more information

[www.shropshiretelfordandwrekin.ics.nhs.uk/hospitals-transformation-programme/](http://www.shropshiretelfordandwrekin.ics.nhs.uk/hospitals-transformation-programme/)



Previous consultation event on the Hospitals Transformation Programme

[www.shropshiretelfordandwrekin.ics.nhs.uk/hospitals-transformation-programme/](http://www.shropshiretelfordandwrekin.ics.nhs.uk/hospitals-transformation-programme/)

# The Shrewsbury and Telford Hospital NHS Trust

## Community Diagnostic Centre (CDC) – bringing care closer to home

The county's first Community Diagnostic Centre (CDC), located at Hollinswood House in Telford, has welcomed more than 13,000 patients for diagnostic testing since it opened, including the first patient to use its new MRI scanner. Its location in the community means that patients do not need to travel to a busy hospital site to access their care.

The centre offers appointments for pathology (blood tests) and radiology, providing extra capacity for non-urgent diagnostic testing.

A state-of-the-art MRI scanner was installed on site at Hollinswood House and means patients have faster access to diagnostic MRIs.

Renal dialysis services are also provided in the same building for lower risk dialysis patients, with acute services remaining at Royal Shrewsbury Hospital. The new location is double the size of the old unit and is able to provide a more positive environment for patients. We will continue to develop further services at Hollinswood House during 2024.



[Find more information](#)

# The Shrewsbury and Telford Hospital NHS Trust

## Existing travel and transport conditions at PRH – onsite parking

- Major car parks surround the hospital facilities on all sides with access via the internal orbital road
- All on-site parking is surface level
- Staff parking capacity, circa 900 spaces and patient / visitor parking, circa 500 spaces
- Drop off and pick up, with limited 20-minute wait time, provided outside the A&E Department, Fracture Clinic / Women's and Children's Department
- There are 36 blue badge parking spaces on site
- Parking charges in place for patients and visitors
- Neighbouring residential roads have double yellow lines in place to restrict off site parking
- We are committed to improving car parking at PRH for patients, visitors and staff and will keep you updated on our progress



Find more information